



# Micro

## Precision Chucks

**ALBRECHT**

Precision Chucks

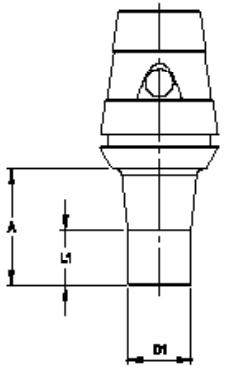


# Micro ER-Chuck

Increases the access of driven tooling.

## Micro ER-Precision-Chuck, for Collet-Chucks according to DIN ISO 15488

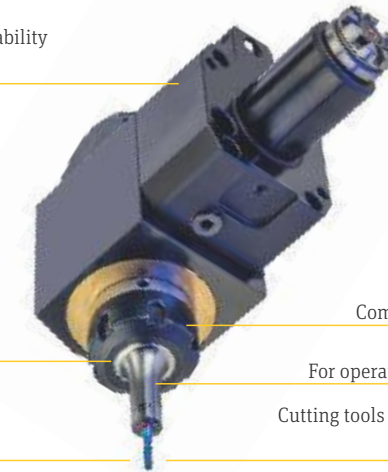
Easy exchange of tools by using a hex-key (included in delivery). Maintenance-free. Sealed against coolant and particles. Slow collet taper angle. Collet with special coating (see page 61). System-Runout-Accuracy 3 µm at 2,5 x D. Clamping of tool shanks according to DIN 1835 A, B and DIN 6535 HB, HA.



High chip removal and process-reliability with driven tooling

High-speed balanced

Coolant directed to cutting tool



Compatible with common ER-nuts

For operation areas with difficult access.

Cutting tools supported over greater length, more rigidity and dampening.

### ER 16

1 – 6 mm

A	Part.No.	L1	D1	Balanced	kg
35	310 1006 316 1*	35	13,5	by design	0,1

\* Special ER-nut included in delivery



### ER 20

1 – 6 mm

A	Part.No.	L1	D1	Balanced	kg
28	310 1006 320 1	28	13,5	by design	0,1
35	310 2006 320 1	35	13,5	by design	0,1



### ER 25

1 – 6 mm

A	Part.No.	L1	D1	Balanced	kg
25	310 1006 325 1	12	13,5	by design	0,1
40	310 2006 325 1	15	13,5	by design	0,1
50	310 3006 325 1	20	13,5	by design	0,1



### ER 32

1 – 6 mm

A	Part.No.	L1	D1	Balanced	kg
25	310 1006 332 1	12	13,5	by design	0,2
40	310 2006 332 1	15	13,5	by design	0,2
50	310 3006 332 1	20	13,5	by design	0,2



# Micro

**The Albrecht Micro.  
Made for the  
smallest and finest  
surfaces. Range  
1 - 6 Millimeter.**

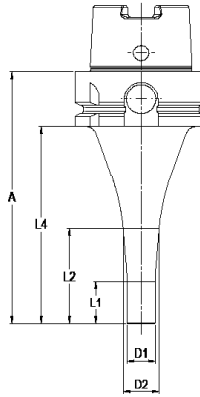
Ideal for microtools.  
Clamping range 1 - 6 mm.  
Peripheral or internal cooling.  
Significantly better dampening  
in comparison to Shrink Chucks.  
Slim shape D1=13,5 mm.  
Perfect runout  $\leq 3 \mu\text{m}$  2,5xD.  
Up to 40.000 1/min  $\leq 1 \text{ gmm}$ .

For the finest surfaces even for  
difficulty accessible areas.  
Special coated collets.  
Maintenance-free.  
The Albrecht Micro.  
None is more fine.

# HSK

## Micro Precision Chuck, ISO 12164 (DIN 69893)

Easy exchange of tools by setting of hex-key (included in delivery). Maintenance free. Sealed against coolant and contamination. Slow collet taper angle. Collet with special coating (see page 61). System-Runout-Accuracy 3 µm at 2,5 x D. Clamping of tool shanks according to DIN 1835 A, B and DIN 6535 HB, HA. Coolant tubes see page 79.



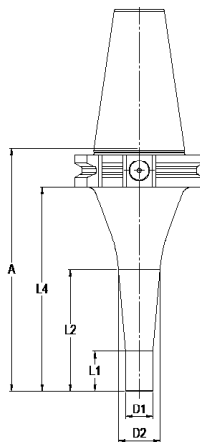
HSK 40-A <span style="float: right;">1 – 6 mm</span>									
A	Part.No.	Form	L1	L2	L4	D1	D2	Balanced	kg
75	310 1006 640 1	A	20	35	55	13,5	16	<1gmm	0,3
HSK 50-A									
85	310 1006 650 1	A	20	34	59	13,5	16	<1gmm	0,5
120	310 2006 650 1	A	20	45	94	13,5	18	<1gmm	0,7
HSK 63-A									
90	310 1006 663 1	A	20	30	64	13,5	15	20.000 G=2,5	0,8
120	310 2006 663 1	A	20	45	94	13,5	17	20.000 G=2,5	1,0
160	310 3006 663 1	A	20	70	134	13,5	22	20.000 G=2,5	1,2
HSK 40-E									
75	310 10E6 640 1	E	20	35	55	13,5	16	<1gmm	0,3
HSK 50-E									
85	310 10E6 650 1	E	20	40	59	13,5	17	<1gmm	0,5
120	310 20E6 650 1	E	20	45	94	13,5	18	<1gmm	0,7



# SK

## Micro Precision Chuck, ISO 7388-1 (DIN 69871)

Easy exchange of tools by setting of hex-key (included in delivery). Maintenance free. Sealed against coolant and contamination. Slow collet taper angle. Collet with special coating (see page 61). System-Runout-Accuracy 3 µm at 2,5 x D. Clamping of tool shanks according to DIN 1835 A, B and DIN 6535 HB, HA.



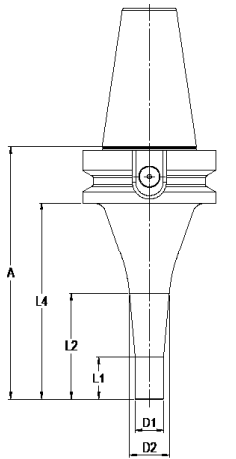
SK 30 <span style="float: right;">1 – 6 mm</span>									
A	Part.No.	Form	L1	L2	L4	D1	D2	Balanced	kg
75	310 2006 230 1	A/AD	20	32	56	13,5	16	<1gmm	0,5
SK 40									
90	310 1006 240 1	A/AD	20	38	71	13,5	17	20.000 G=2,5	1,0
120	310 2006 240 1	A/AD	20	60	101	13,5	21	20.000 G=2,5	1,2
160	310 3006 240 1	A/AD	20	75	141	13,5	23	20.000 G=2,5	1,2



# MAS-BT

## Micro Precision Chuck, ISO 7388-2 (JIS B 6339)

Easy exchange of tools by setting of hex-key (included in delivery). Maintenance free. Sealed against coolant and contamination. Slow collet taper angle. Collet with special coating (see page 61). System-Runout-Accuracy 3 µm at 2,5 x D. Clamping of tool shanks according to DIN 1835 A, B and DIN 6535 HB, HA.



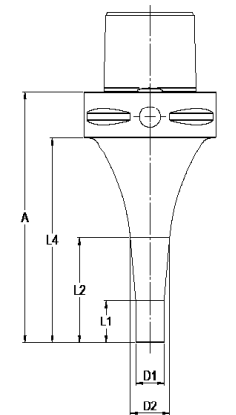
BT 30 <span style="float: right;">1 – 6 mm</span>									
A	Part.No.	Form	L1	L2	L4	D1	D2	Balanced	kg
75	310 2006 430 1	A/AD	20	30	53	13,5	15	<1gmm	0,5
BT 40									
90	310 1006 440 1	A/AD	20	30	63	13,5	15	20.000 G=2,5	1,2
120	310 2006 440 1	A/AD	20	50	93	13,5	19	20.000 G=2,5	1,3
160	310 3006 440 1	A/AD	20	70	133	13,5	22	20.000 G=2,5	1,3



# Polygon

## Micro Precision Chuck, DIN ISO 26623-1

Easy exchange of tools by setting of hex-key (included in delivery). Maintenance free. Sealed against coolant and contamination. Slow collet taper angle. Collet with special coating (see page 61). System-Runout-Accuracy 3 µm at 2,5 x D. Clamping of tool shanks according to DIN 1835 A, B and DIN 6535 HB, HA.

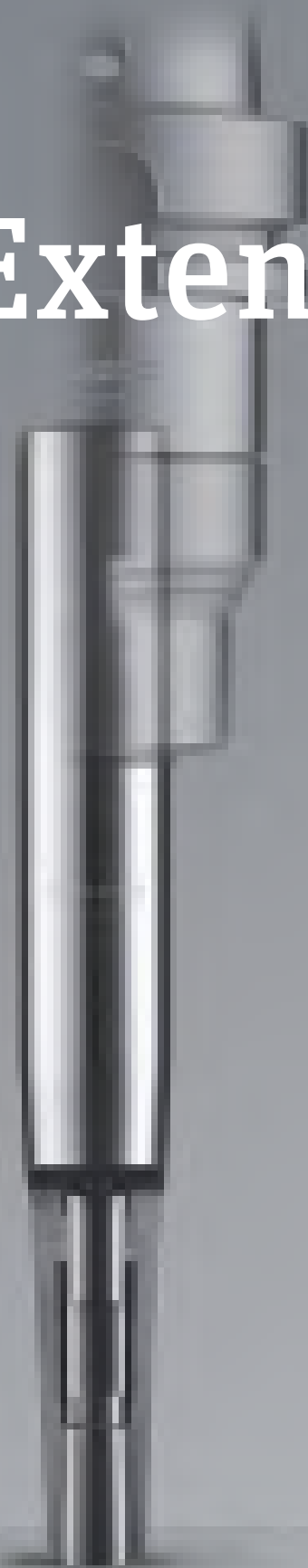


PSC 40 <span style="float: right;">1 – 6 mm</span>									
A	Part.No.	Form	L1	L2	L4	D1	D2	Balanced	kg
75	310 1006 9C4 1	A	20	35	55	13,5	16	<1gmm	0,3
PSC 63									
90	310 1006 9C6 1	A	20	30	68	13,5	15	20.000 G=2,5	1,0
120	310 2006 9C6 1	A	20	50	98	13,5	19	20.000 G=2,5	1,1



# Micro Chuck-Extension

For extension of Precision Chucks.  
Very slim design for operation areas which are not easy to access. High gripping torque and accuracy due to slow angle taper.

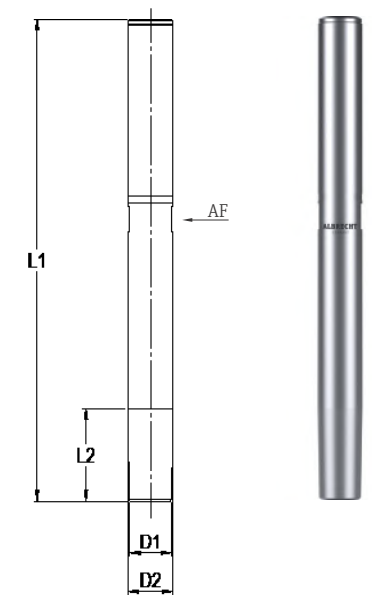


## Micro Precision-Chuck-Extension with Cylindrical Shank.

Easy exchange of tools by setting of hex-key (included in delivery). Maintenance free. Sealed against coolant and contamination. Slow collet taper angle. Collet with special coating (see page 61). Clamping of tool shanks according to DIN 1835 A, B and DIN 6535 HB, HA. Tolerance of shank h6. System-Runout-Accuracy 8 µm at 2,5 x D.

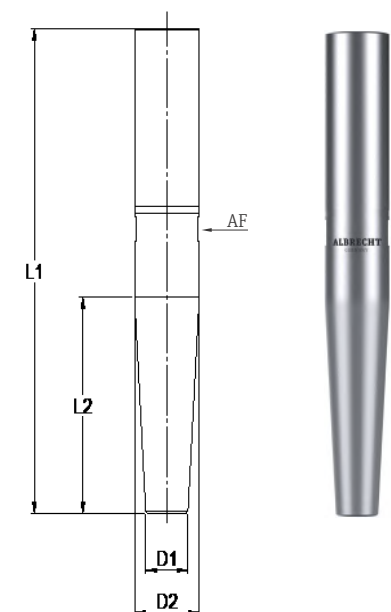
### Cylindrical shank 14 mm 1 – 6 mm

L1	Part.No.	Coolant	L2	D1	D2	AF	kg
100	310 1006 814 1	Central	29	13	14	13	0,16
150	310 2006 814 1	Central	29	13	14	13	0,10



### Cylindrical shank 20 mm 1 – 6 mm

L1	Part.No.	Coolant	L2	D1	D2	AF	kg
100	310 1006 820 1	Central	45	13	20	13	0,17
150	310 2006 820 1	Central	67	13	20	19	0,30



# Collets and Accessories



**Collets Peripheral Coolant.** Additional cooling and rinsing effect. Increases the safety of processing. Special Coating. Maintenance free. Clamping of tool shanks corresponding to DIN 1835A, B and DIN 6335 HB, HA.

1 – 6 mm

D	Part.No.	Coolant	kg
1,0	136 0601 000 0	Periphery	0,02
2,0	136 0602 000 0	Periphery	0,02
2,5	136 0602 500 0	Periphery	0,02
2,8	136 0602 800 0	Periphery	0,02
3,0	136 0603 000 0	Periphery	0,02
3,5	136 0603 500 0	Periphery	0,02
4,0	136 0604 000 0	Periphery	0,02
4,5	136 0604 500 0	Periphery	0,02
5,0	136 0605 000 0	Periphery	0,02
6,0	136 0606 000 0	Periphery	0,02

Special size and inch diameter on request

**Collets Internal Coolant.** 100% leak proof up to 100 bar coolant pressure. Special Coating. Maintenance free. Clamping of tool shanks corresponding to DIN 1835A, B and DIN 6335 HB, HA.

1 – 6 mm

D	Part.No.	Coolant	kg
1,0	136 0601 000 T	Central	0,02
2,0	136 0602 000 T	Central	0,02
2,5	136 0602 500 T	Central	0,02
2,8	136 0602 800 T	Central	0,02
3,0	136 0603 000 T	Central	0,02
3,5	136 0603 500 T	Central	0,02
4,0	136 0604 000 T	Central	0,02
4,5	136 0604 500 T	Central	0,02
5,0	136 0605 000 T	Central	0,02
6,0	136 0606 000 T	Central	0,02

Special size and inch diameter on request

Torque Key	Part.No.
3,0 - 5,4 Nm	139 0005 900 0

Taper Wiper	Part.No.
for Micro	139 0000 GRO 0
Replacement papers, 25 pcs.	139 0000 GRO 2

Pull Stud	Part.No.	Thread	through-hole	Angle	Neck- Ø	kg
SK30	138 0004 230 0	M12	Ø4	15°	9	0,03
BT30	138 0004 430 0	M12	Ø4	45°	8	0,04
BT40	138 0004 440 0	M16	Ø4	45°	10	0,04

based on DIN







**ALBRECHT**  
GERMANY

ALBRECHT PRÄZISION  
GmbH & Co. KG

D-73249 Wernau  
Antoniusstraße 25  
T +49 7153 / 3006-0  
F +49 7153 / 300611  
info@albrecht-germany.com  
www.albrecht-germany.com

**ALBRECHT**  
Precision Chucks